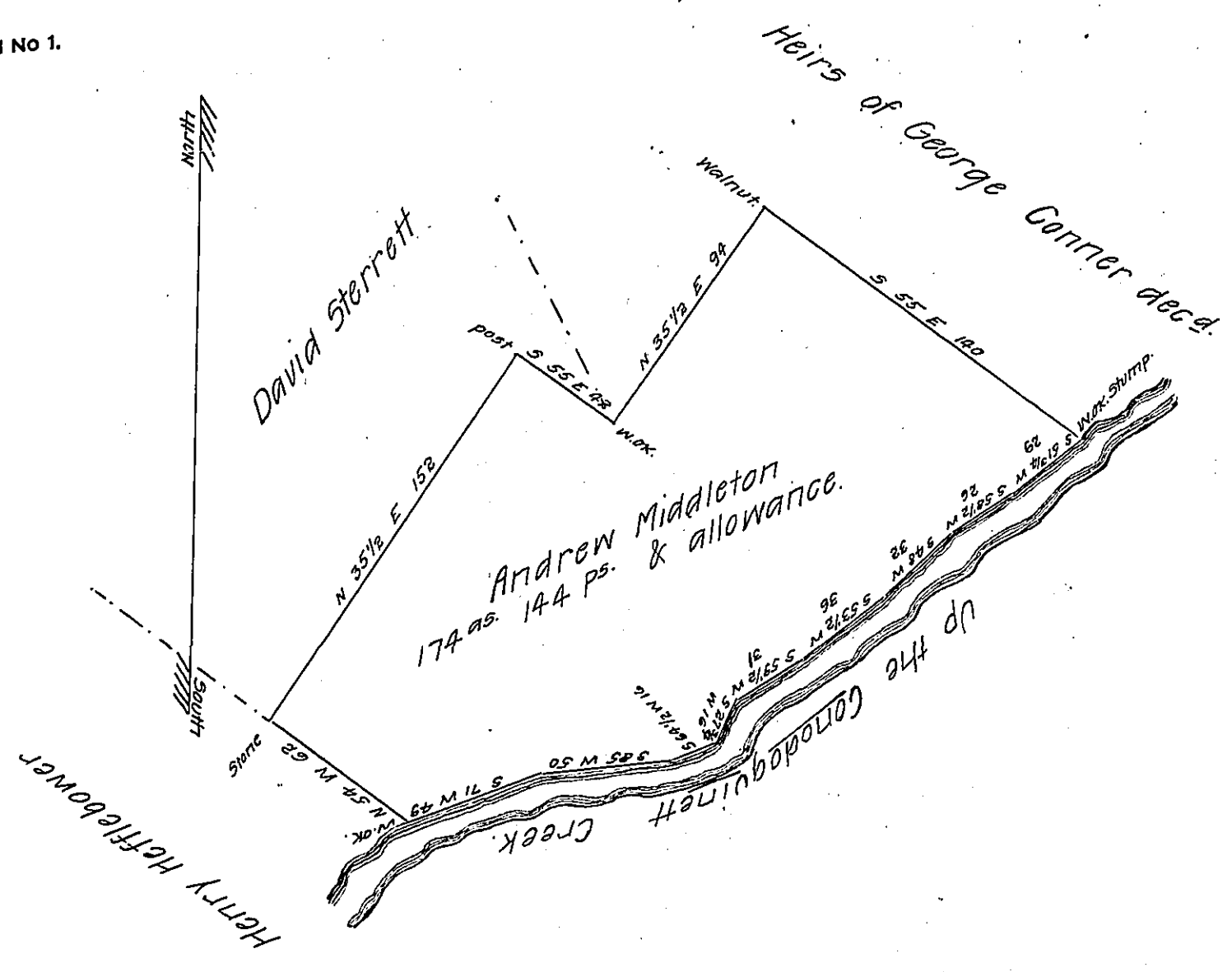


FORM No 1.



Draught of a tract of land Situate in Mifflin township Cumberland
 County, Surveyed September 25th 1855. In pursuance of a warrant granted
 to John Nisbet dated January 31st 1794. The above ^{tract} contains 174 as.
 144 ps. & allowance.

Ab^m. Lamberton
 County Surveyor.

To J. Porter Branley Esq.
 Surveyor General.

IN TESTIMONY that the above is a copy of the original remaining on file in
 the Department of Internal Affairs of Pennsylvania, made
 conformably to an Act of Assembly approved the 16th day of
 February, 1833, I have hereunto set my Hand and caused
 the Seal of said Department to be affixed at Harrisburg,
 this twelfth day of December 1907.

Henry Horck
 Secretary of Internal Affairs.